

# COMMAND CENTER BUILDOUT

CLIENTE CONFIDENCIAL | UBICACION CONFIDENCIAL  
Permit Plan Set - Issued for Building Permit Submittal

## ISSUED FOR PERMIT

Date: CONFIDENCIAL  
Proje  
Draw

### VICINITY MAP

CONF.

MAPA CONFIDENCIAL

### PROJECT INFORMATION

PROJECT NAME: PROYECTO CONFIDENCIAL  
PROJECT ADDRESS: UBICACION CONFIDENCIAL  
OCCUPANCY GROUP: CONF.  
CONSTRUCTION TYPE: V-B  
SCOPE OF WORK: Interior tenant buildout — new command center  
PROJECT COST: INFORMACION CONFIDENCIAL  
NATURE OF WORK:

### SHEET INDEX

SHEET	TITLE
G-001	Cover Sheet — Project Information & Vicinity
G-002	3D Architectural Render & Code Compliance
A-100	Existing Conditions — Shell Plan
A-101	Architectural Floor Plan — Carpentry
M-101	Mechanical Plan — HVAC
E-101	Electrical Plan — Power & Lighting
P-101	Plumbing Plan
A-501	Composite MEP Coordination Plan

### SITE LOCATION MAP

MAPA CONFIDENCIAL

UBICACION CONFIDENCIAL

### PROJECT TEAM

CLIENTE CONFIDENCIAL

CONTRATISTA CONFIDENCIAL

PREPARADOR CONFIDENCIAL

REFERENCIA CONFIDENCIAL

### NOTES:

COMMERCIAL TENANT BUILDOUT  
COMMAND CENTER FACILITY

APPLICABLE CODES:  
2018 IBC / IRC / IMC / IPC  
2018 IECC | 2020 NEC

SCALE: 1/4" = 1'-0" @ 36"x24"

### AMENDMENTS

REV	DESCRIPTION	BY	DATE
A	PERMIT ISSUE		

EMPRESA CONFIDENCIAL

CONTRATISTA CONFIDENCIAL

CLIENTE CONFIDENCIAL

UBICACION CONFIDENCIAL

### COVER SHEET PROJECT INFORMATION

SCALE 1/4" = 1'-0"	DATE CONF.	CONF.
PROJECT NO. CONF.	SHEET NO. <b>G-001</b>	
DRAWING NO. CONF.		

# 3D ARCHITECTURAL RENDER & CODE COMPLIANCE

Render is decorative only — not to scale. See plan sheets for dimensions and specifications.

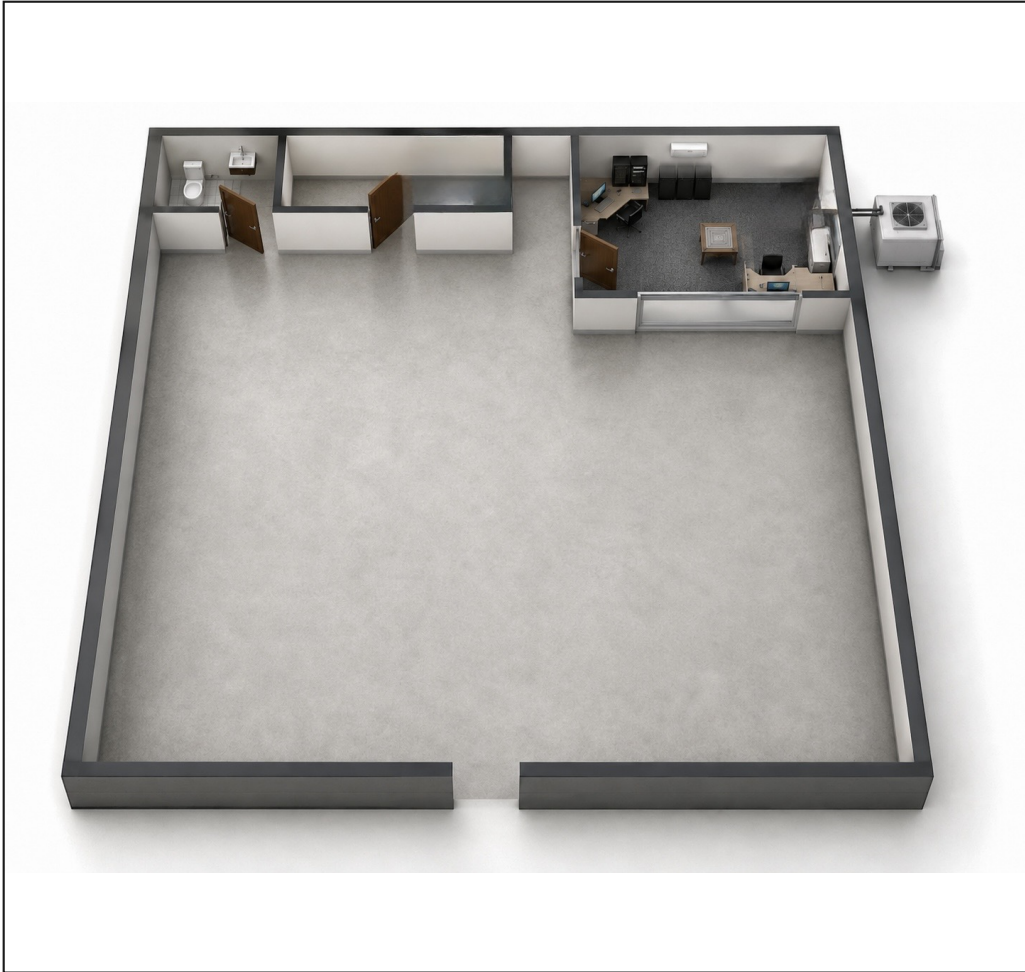


FIG. 1 — Volumetric render of proposed command center buildout (decorative)

## APPLICABLE CODES

<b>BUILDING</b>	2018 IBC — Int. Building Code
<b>RESIDENTIAL</b>	2018 IRC — Int. Residential Code
<b>MECHANICAL</b>	2018 IMC — Int. Mechanical Code
<b>PLUMBING</b>	2018 IPC — Int. Plumbing Code
<b>ENERGY</b>	2018 IECC — Energy Conservation
<b>ELECTRICAL</b>	2020 NEC — NFPA 70
<b>FIRE</b>	2018 IFC + NFPA 101
<b>ACCESSIBILITY</b>	TAS 2012 — TDLR (< \$50K, N/A)
<b>ASBESTOS</b>	TAHPR + NESHAP per AHJ

## NOTES:

COMMERCIAL TENANT BUILDOUT  
COMMAND CENTER FACILITY

APPLICABLE CODES:  
2018 IBC / IRC / IMC / IPC  
2018 IECC | 2020 NEC

SCALE: 1/4" = 1'-0" @ 36"x24"

## AMENDMENTS

REV	DESCRIPTION	BY	DATE
A	PERMIT ISSUE		

EMPRESA CONFIDENCIAL

CONTRATISTA CONFIDENCIAL

CLIENTE CONFIDENCIAL

UBICACION CONFIDENCIAL

## 3D RENDER & CODE COMPLIANCE

SCALE 1/4" = 1'-0"	DATE	CONF.
PROJECT NO.	CONF.	SHEET NO.
DRAWING NO.	CONF.	<b>G-002</b>

## CODE DATA SHEET

<b>Occupancy Classification</b>	Group B — Business
<b>Construction Type</b>	Type V-B (non-rated)
<b>Building Area (shell)</b>	± 1,200 sq ft (field verify)
<b>Command Center Area</b>	± 180 sq ft (new)
<b>Occupant Load</b>	≤ 5 (1 per 150 sf, B occupancy)
<b>Means of Egress</b>	Existing roll-up / mandoor
<b>Fire Extinguisher</b>	Min. 1 x 2-A:10-B:C per NFPA 10
<b>Wind Load</b>	110 mph (V-ult), existing shell
<b>Sprinkler System</b>	Not required

## SCOPE OF WORK SUMMARY

<b>CARPENTRY</b>	Frame walls per layout; R-30 insulation; drywall L4; FRP 4' wainscot; (1) 36"x8' door + tempered lite; (1) window; Corian Platinum top; Armstrong Cortega 2x4 ACT ceiling; ESD carpet tiles.
<b>MECHANICAL</b>	Mitsubishi Mini-Split: 1-ton EZ-FIT cassette (PLFY-L12NFMU-A, R-454B, 12 MBH); 3-ton ODU (MXZ-SM36NL, R-454B, 36 MBH).
<b>ELECTRICAL</b>	(6) new 20A/120V dedicated circuits; (3) Lithonia CPX flush LED in ACT; dedicated mini-split circuit/breaker; egress lighting.
<b>PLUMBING</b>	No new fixtures within command center. Existing bathroom unchanged.

NOTES:

COMMERCIAL TENANT BUILDOUT  
COMMAND CENTER FACILITY

APPLICABLE CODES:  
2018 IBC / IRC / IMC / IPC  
2018 IECC | 2020 NEC

SCALE: 1/4" = 1'-0" @ 36"x24"

AMENDMENTS

REV	DESCRIPTION	BY	DATE
A	PERMIT ISSUE		

EMPRESA CONFIDENCIAL

CONTRATISTA CONFIDENCIAL

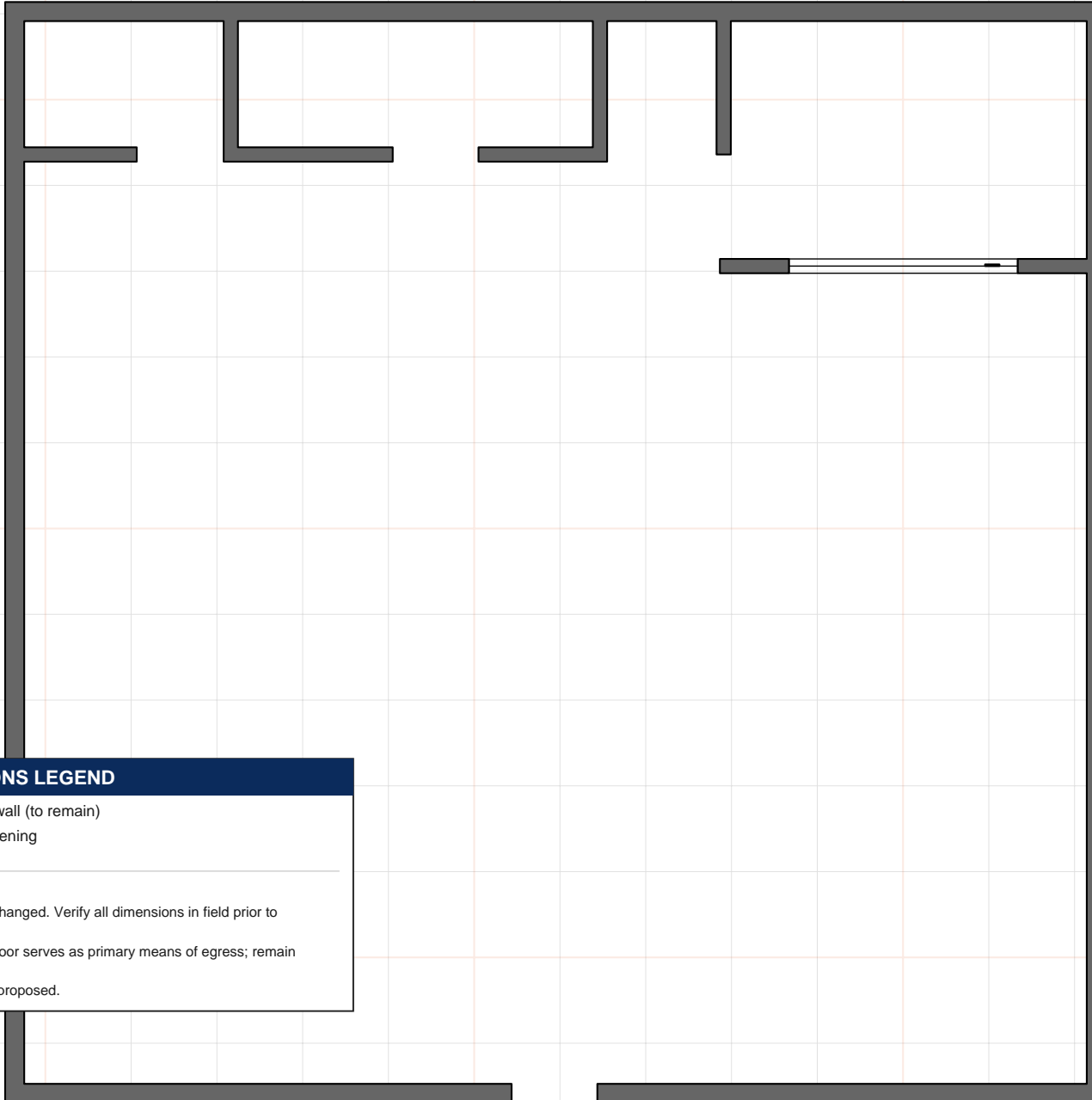
CLIENTE CONFIDENCIAL

UBICACION CONFIDENCIAL

EXISTING CONDITIONS SHELL PLAN

SCALE 1/4" = 1'-0"	DATE	CONF.
-----------------------	------	-------

PROJECT NO.	CONF.	SHEET NO.
DRAWING NO.	CONF.	<b>A-100</b>

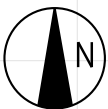


EXISTING CONDITIONS LEGEND

- Existing exterior wall (to remain)
- Existing door / opening

GENERAL NOTES:

- Existing shell to remain unchanged. Verify all dimensions in field prior to construction.
- Existing roll-up door / mandoor serves as primary means of egress; remain operational throughout.
- No structural modifications proposed.



GRAPHIC SCALE

1/4" = 1'-0" @ 36" x 24" sheet



**NOTES:**

COMMERCIAL TENANT BUILDOUT  
COMMAND CENTER FACILITY

APPLICABLE CODES:  
2018 IBC / IRC / IMC / IPC  
2018 IECC | 2020 NEC

SCALE: 1/4" = 1'-0" @ 36"x24"

**AMENDMENTS**

REV	DESCRIPTION	BY	DATE
A	PERMIT ISSUE		

EMPRESA CONFIDENCIAL

CONTRATISTA CONFIDENCIAL

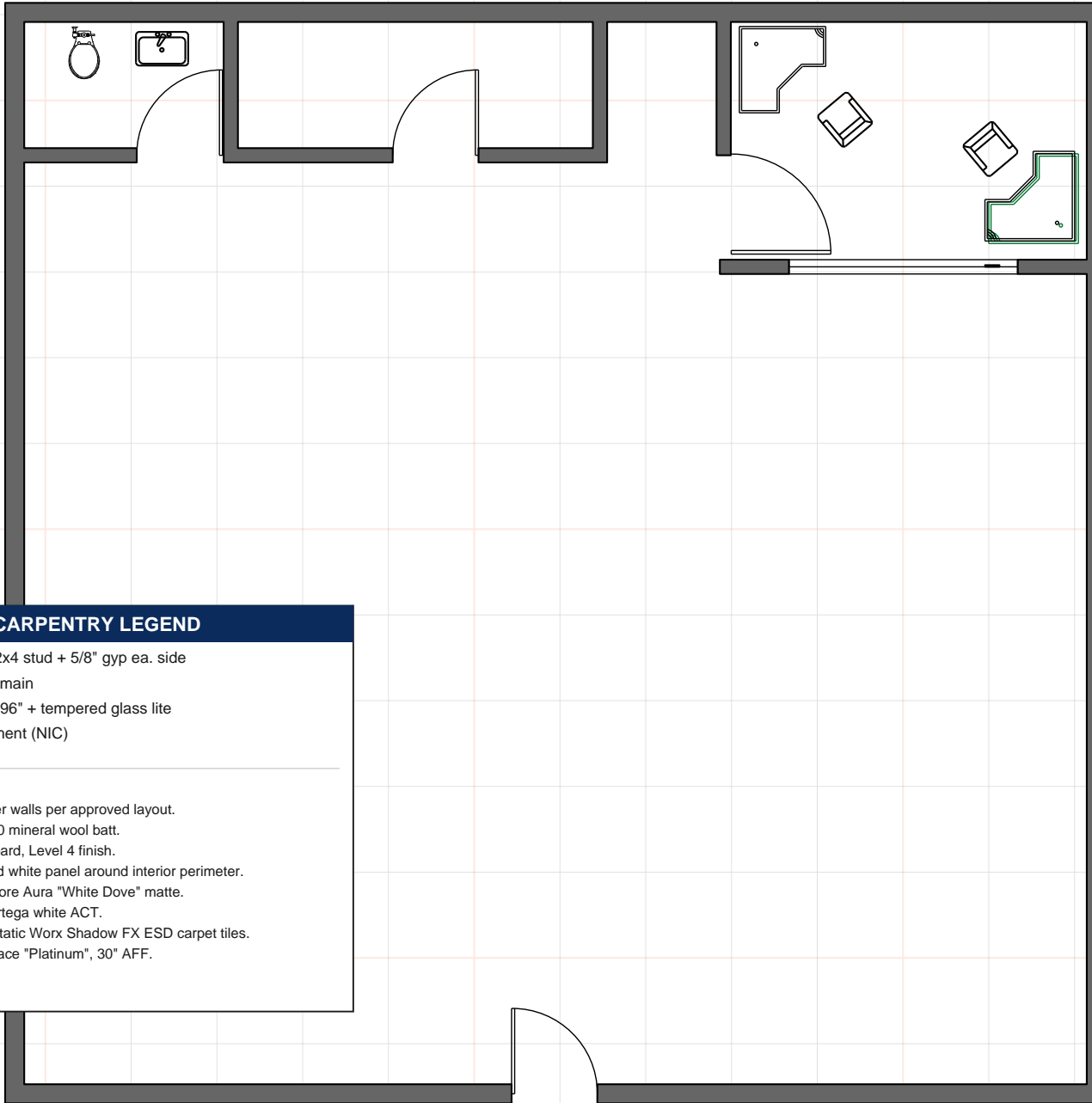
CLIENTE CONFIDENCIAL

UBICACION CONFIDENCIAL

**ARCHITECTURAL FLOOR PLAN  
CARPENTRY**

SCALE	DATE	CONF.
1/4" = 1'-0"		

PROJECT NO.	CONF.	SHEET NO.
		<b>A-101</b>
DRAWING NO.	CONF.	



**ARCHITECTURAL / CARPENTRY LEGEND**

- New partition — 2x4 stud + 5/8" gyp ea. side
- Existing wall to remain
- New door — 36"x96" + tempered glass lite
- Furniture / equipment (NIC)

**GENERAL NOTES:**

1. Frame new command center walls per approved layout.
2. Insulate new walls with R-30 mineral wool batt.
3. Drywall: 5/8" Type X gyp board, Level 4 finish.
4. Wainscot: 4' FRP embossed white panel around interior perimeter.
5. Paint: 2 coats Benjamin Moore Aura "White Dove" matte.
6. Ceiling: 2'x4' Armstrong Cortega white ACT.
7. Flooring: 125 sf Playbook Static Worx Shadow FX ESD carpet tiles.
8. Desk top: Corian Solid Surface "Platinum", 30" AFF.



**GRAPHIC SCALE**

1/4" = 1'-0" @ 36" x 24" sheet



**NOTES:**

COMMERCIAL TENANT BUILDOUT  
COMMAND CENTER FACILITY

APPLICABLE CODES:  
2018 IBC / IRC / IMC / IPC  
2018 IECC | 2020 NEC

SCALE: 1/4" = 1'-0" @ 36"x24"

**AMENDMENTS**

REV	DESCRIPTION	BY	DATE
A	PERMIT ISSUE		

EMPRESA CONFIDENCIAL

CONTRATISTA CONFIDENCIAL

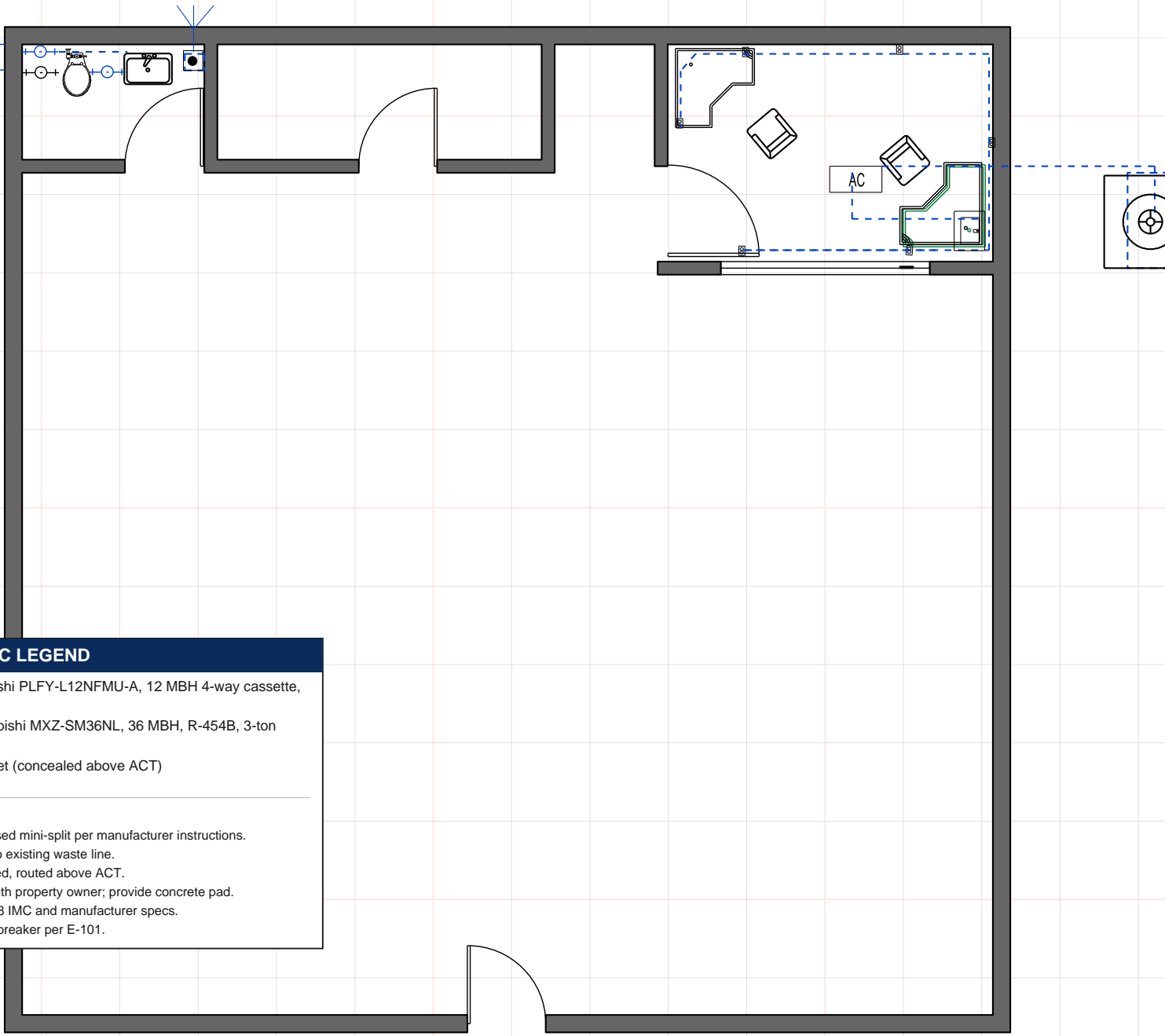
CLIENTE CONFIDENCIAL

UBICACION CONFIDENCIAL



**MECHANICAL PLAN HVAC**

SCALE 1/4" = 1'-0"	DATE	CONF.
-----------------------	------	-------

PROJECT NO.	CONF.	SHEET NO.
DRAWING NO.	CONF.	<b>M-101</b>



**MECHANICAL / HVAC LEGEND**

- AC Indoor — Mitsubishi PLFY-L12NFMU-A, 12 MBH 4-way cassette, R-454B
-  Outdoor — Mitsubishi MXZ-SM36NL, 36 MBH, R-454B, 3-ton ODU
-  Refrigerant line set (concealed above ACT)

**GENERAL NOTES:**

1. Install EZ-FIT ceiling-recessed mini-split per manufacturer instructions.
2. Provide condensate drain to existing waste line.
3. Refrigerant line set: insulated, routed above ACT.
4. Coordinate ODU location with property owner; provide concrete pad.
5. All work to comply with 2018 IMC and manufacturer specs.
6. Provide dedicated circuit + breaker per E-101.



**GRAPHIC SCALE**

1/4" = 1'-0" @ 36" x 24" sheet



**NOTES:**

COMMERCIAL TENANT BUILDOUT  
COMMAND CENTER FACILITY

APPLICABLE CODES:  
2018 IBC / IRC / IMC / IPC  
2018 IECC | 2020 NEC

SCALE: 1/4" = 1'-0" @ 36"x24"

**AMENDMENTS**

REV	DESCRIPTION	BY	DATE
A	PERMIT ISSUE		

EMPRESA CONFIDENCIAL

CONTRATISTA CONFIDENCIAL

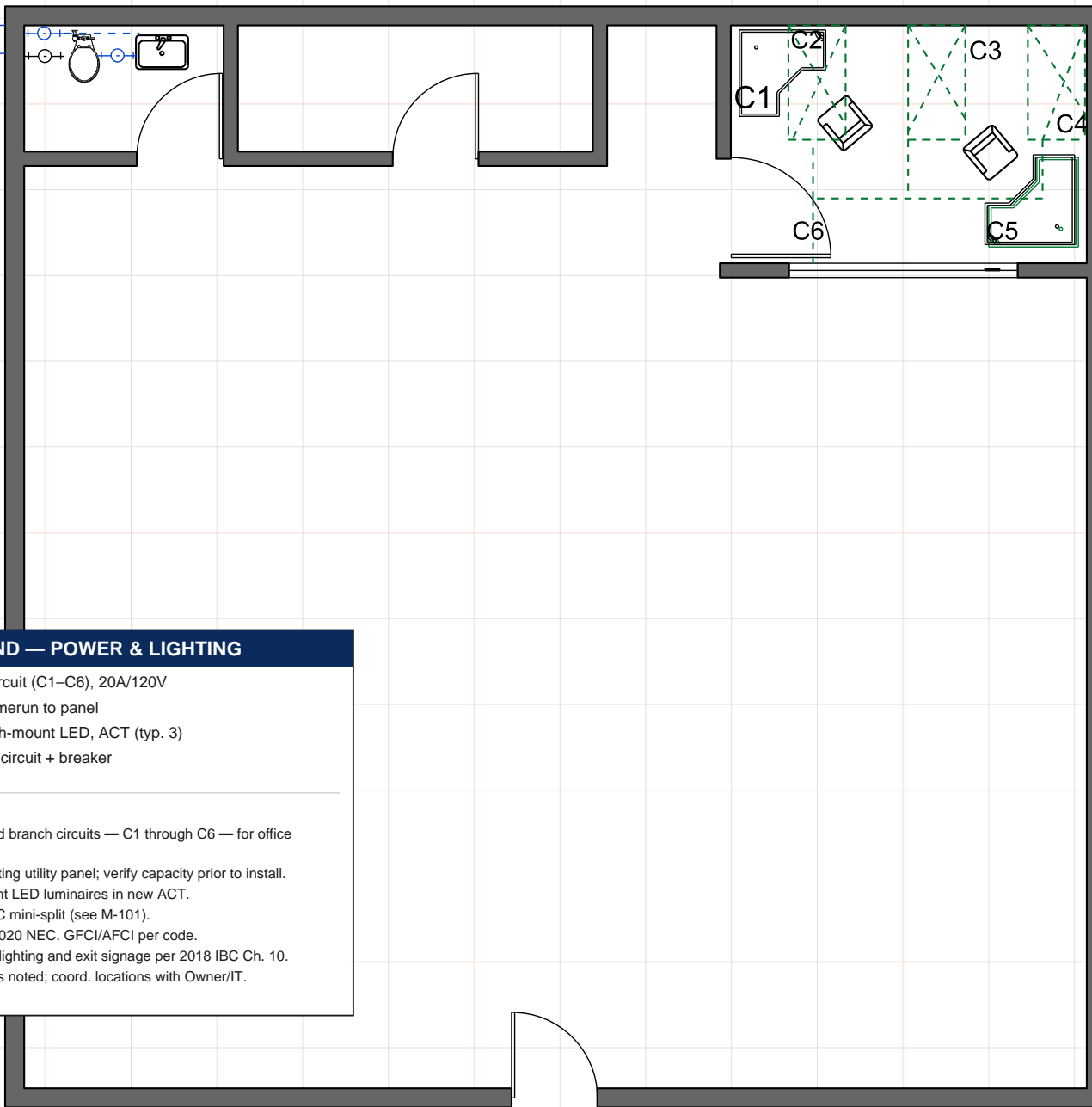
CLIENTE CONFIDENCIAL

UBICACION CONFIDENCIAL

**ELECTRICAL PLAN POWER & LIGHTING**

SCALE 1/4" = 1'-0"	DATE	CONF.
-----------------------	------	-------

PROJECT NO.	CONF.	SHEET NO.
DRAWING NO.	CONF.	<b>E-101</b>

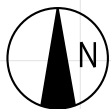


**ELECTRICAL LEGEND — POWER & LIGHTING**

- C# New dedicated circuit (C1–C6), 20A/120V
- Branch circuit homerun to panel
- Lithonia CPX flush-mount LED, ACT (typ. 3)
- AC Dedicated HVAC circuit + breaker

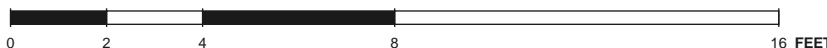
**GENERAL NOTES:**

1. (6) new 20A/120V dedicated branch circuits — C1 through C6 — for office equipment.
2. All circuits terminate at existing utility panel; verify capacity prior to install.
3. (3) Lithonia CPX flush-mount LED luminaires in new ACT.
4. Dedicated breaker for HVAC mini-split (see M-101).
5. All work shall comply with 2020 NEC. GFCI/AFCI per code.
6. Provide emergency/egress lighting and exit signage per 2018 IBC Ch. 10.
7. Receptacles 18" AFF unless noted; coord. locations with Owner/IT.



**GRAPHIC SCALE**

1/4" = 1'-0" @ 36" x 24" sheet



**NOTES:**

COMMERCIAL TENANT BUILDOUT  
COMMAND CENTER FACILITY

APPLICABLE CODES:  
2018 IBC / IRC / IMC / IPC  
2018 IECC | 2020 NEC

SCALE: 1/4" = 1'-0" @ 36"x24"

**AMENDMENTS**

REV	DESCRIPTION	BY	DATE
A	PERMIT ISSUE		

EMPRESA CONFIDENCIAL

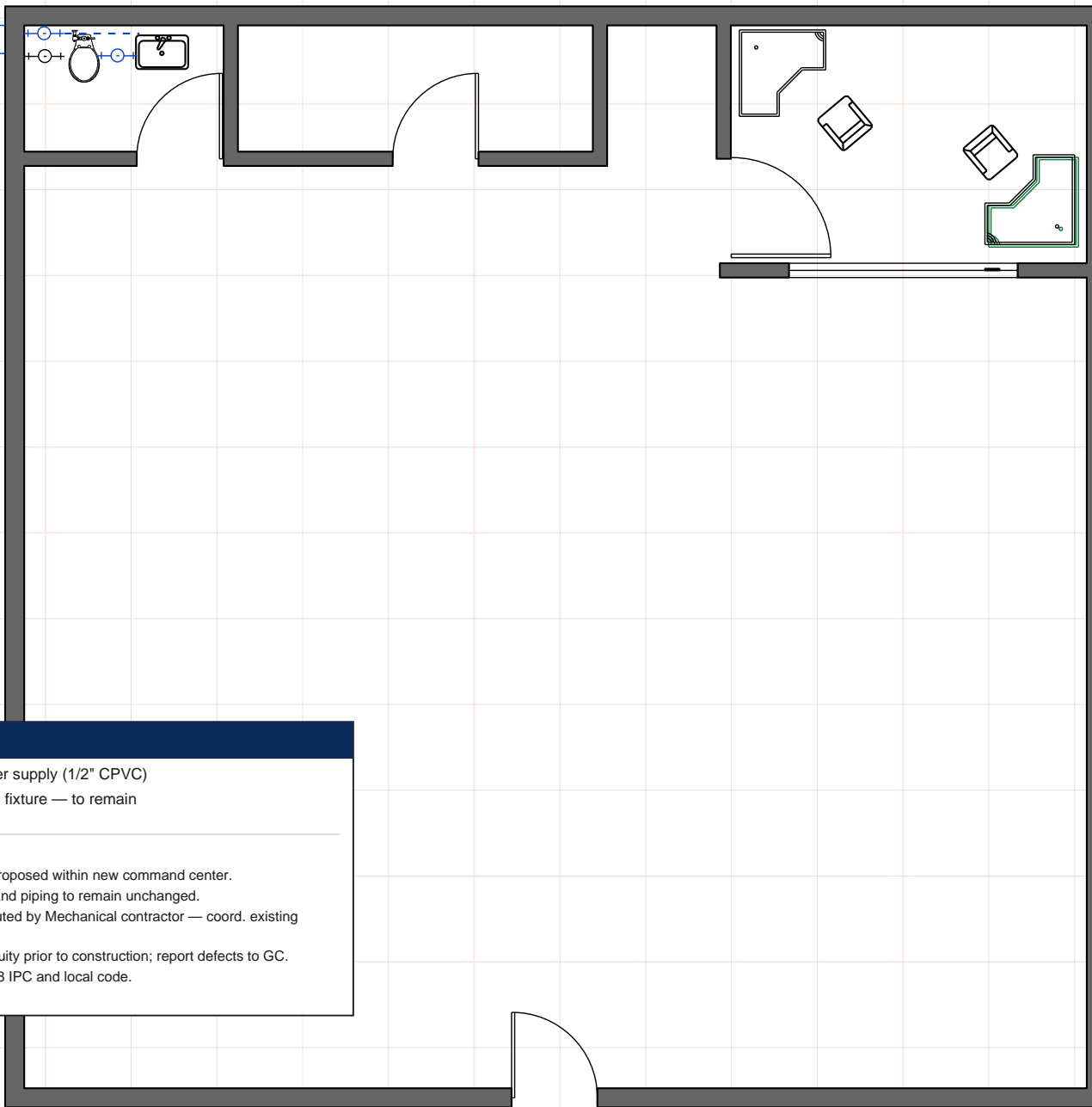
CONTRATISTA CONFIDENCIAL

CLIENTE CONFIDENCIAL

UBICACION CONFIDENCIAL

**PLUMBING PLAN**

SCALE 1/4" = 1'-0"	DATE CONF.	CONF.
PROJECT NO. CONF.	SHEET NO. <b>P-101</b>	
DRAWING NO. CONF.		

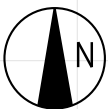


**PLUMBING LEGEND**

- - - Existing cold water supply (1/2" CPVC)
- Existing plumbing fixture — to remain

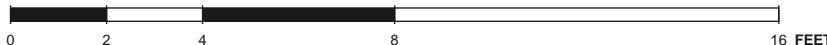
**GENERAL NOTES:**

1. No new plumbing fixtures proposed within new command center.
2. Existing bathroom fixtures and piping to remain unchanged.
3. HVAC condensate drain routed by Mechanical contractor — coord. existing waste line.
4. Verify existing piping continuity prior to construction; report defects to GC.
5. All work to comply with 2018 IPC and local code.



**GRAPHIC SCALE**

1/4" = 1'-0" @ 36" x 24" sheet



**NOTES:**

COMMERCIAL TENANT BUILDOUT  
COMMAND CENTER FACILITY

APPLICABLE CODES:  
2018 IBC / IRC / IMC / IPC  
2018 IECC | 2020 NEC

SCALE: 1/4" = 1'-0" @ 36"x24"

**AMENDMENTS**

REV	DESCRIPTION	BY	DATE
A	PERMIT ISSUE		

EMPRESA CONFIDENCIAL

CONTRATISTA CONFIDENCIAL

CLIENTE CONFIDENCIAL








UBICACION CONFIDENCIAL

**COMPOSITE MEP COORDINATION PLAN**

SCALE	DATE	CONF.
1/4" = 1'-0"		

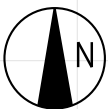
PROJECT NO.	CONF.	SHEET NO.
		<b>A-501</b>
DRAWING NO.	CONF.	

**COMPOSITE COORDINATION LEGEND**

-  New partition wall
-  Existing wall to remain
-  New 20A/120V circuit (C1-C6)
-  Lithonia CPX LED (3 total)
-  Mitsubishi 1-ton indoor cassette
-  Mitsubishi 3-ton outdoor unit
-  Existing water supply (no new plumbing)

**GENERAL NOTES:**

1. Composite plan shows all disciplines overlaid for coordination review.
2. Refer to individual sheets A-101, M-101, E-101, P-101 for detail and specs.
3. GC to coordinate all trades prior to start; resolve conflicts with Owner/GC.
4. All work to comply with codes listed on G-002.



**GRAPHIC SCALE**

1/4" = 1'-0" @ 36" x 24" sheet

